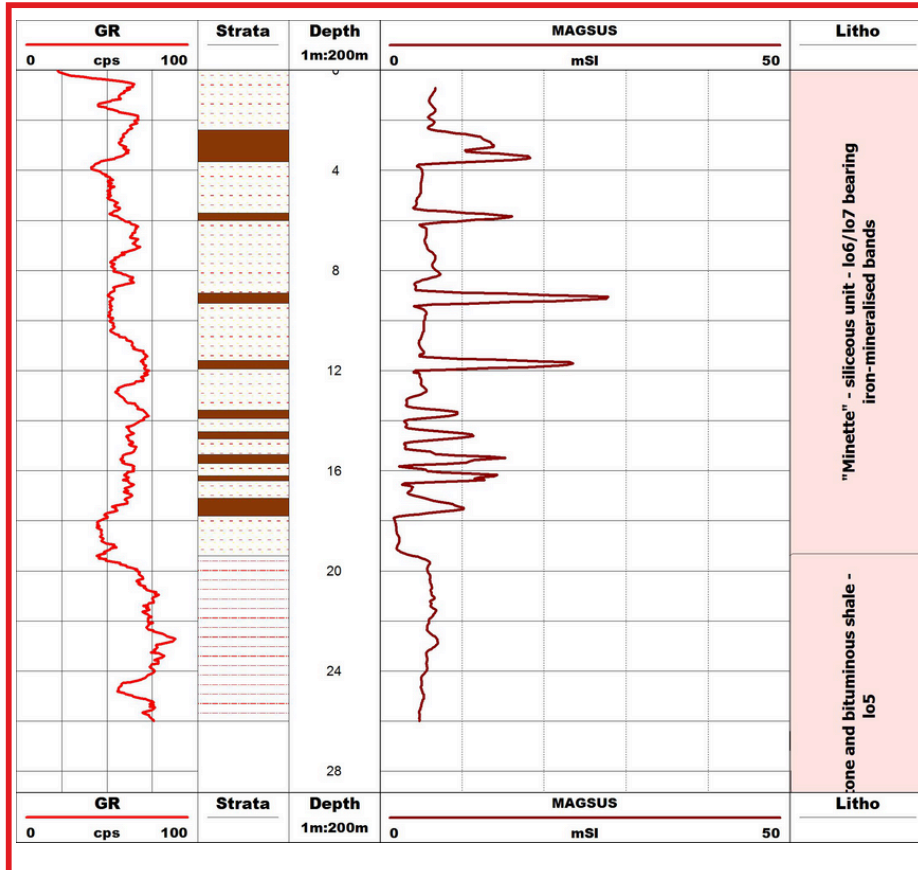


## Case study - Magnetic susceptibility



The example log shown on the left was recorded in a borehole drilled through the iron-bearing strata of the "Minette" region of Luxembourg.

The iron mineralisation is sedimentary in origin and occurs in a series of oolitic beds.

Since, in this case, the iron mineralisation is present in the form of haematite, the extremely high values characteristic of rocks containing magnetite were not observed.

Nevertheless, each individual bed is well-defined and the amplitude of the response varies according to iron content.

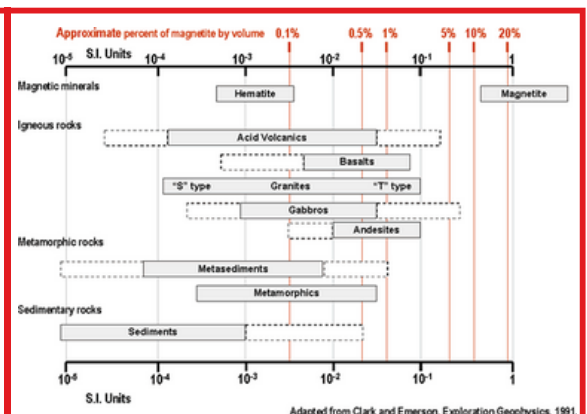
The probe used also provided a natural gamma log.



Outcrop of iron-bearing "Minette" formations (photo © OUGS)

The photo to the left shows an outcrop of iron-bearing "Minette" formations at a site in the south of Luxembourg.

The table to the right gives typical magnetic susceptibility values for a number of commonly-encountered rock types. The values are displayed in SI units on a logarithmic scale.



Magnetic susceptibility of common rock types