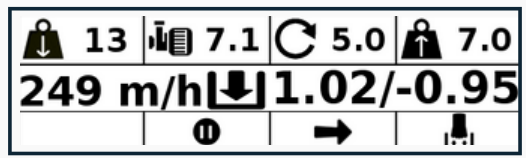
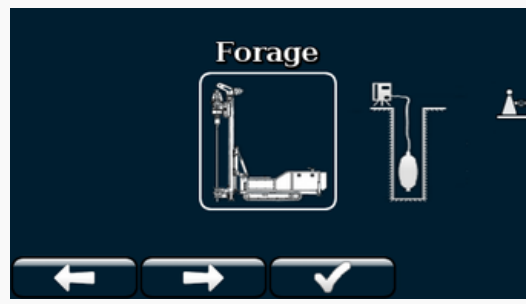
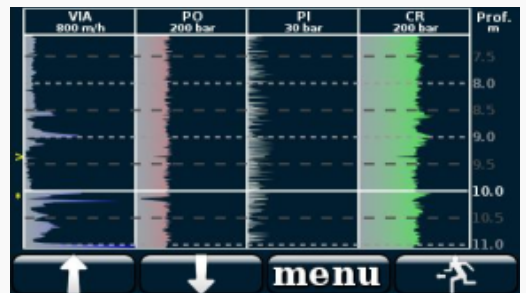
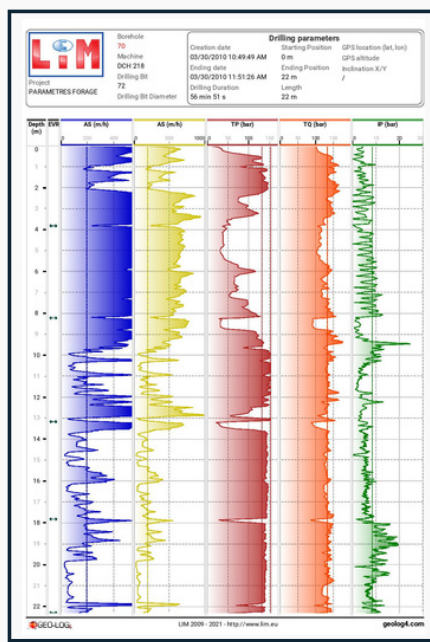
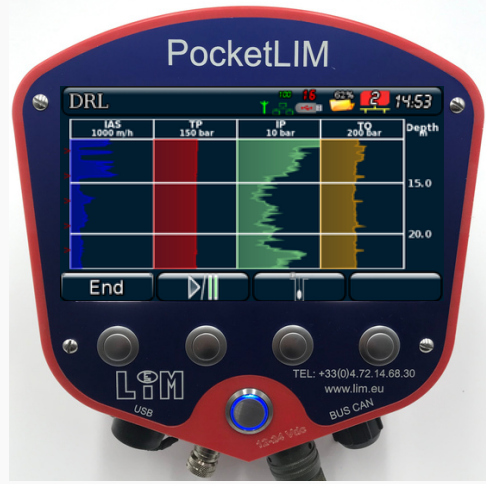


DRILLING - Application

DISPLAY, ACQUISITION & RECORDING OF DRILLING PARAMETERS (MWD)

The **PocketLIM, MiniLIM & NanoLIM-Drilling** display and record in real time the following drilling parameters vs depth :

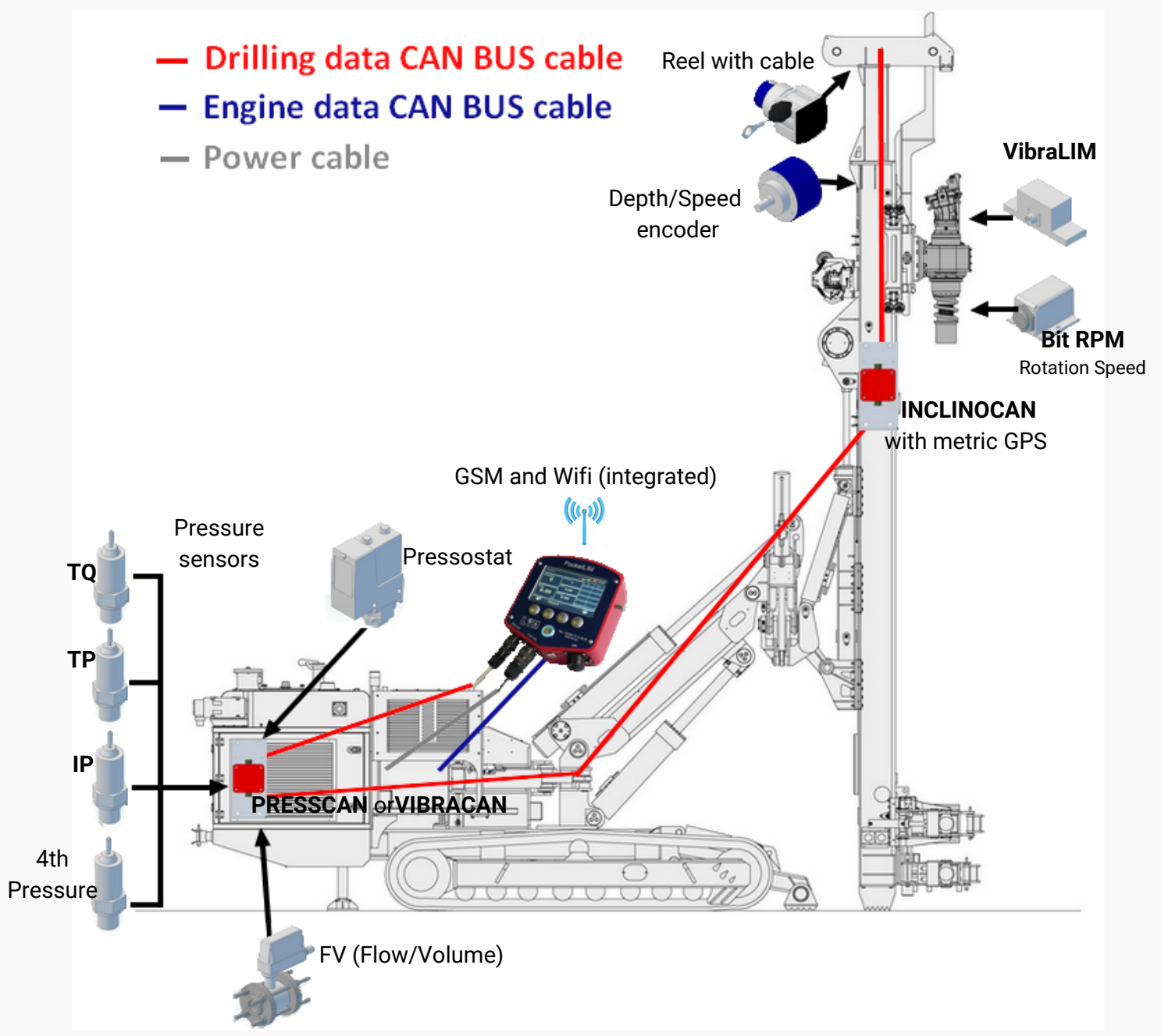
- ✓ Instantaneous Advance Speed or Penetration Rate (IAS),
- ✓ Tool or Pull down Pressure (TP),
- ✓ Torque Pressure (TQ),
- ✓ Injection Pressure of the drilling fluid (IP),
- ✓ Bit Rotation or Revolution Speed (Bit RPM),
- ✓ Instantaneous Drilling Time (Time),
- ✓ Reflected Vibration (VibraLIM),
- ✓ Holdback Pressure (HP),
- ✓ Strike Pressure (SP),
- ✓ One or two fluid flowrates (Q),
- ✓ Any other drilling parameter vs depth.

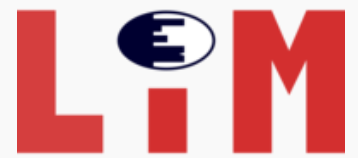


INSTALLATION OF SENSORS - THE CAN BUS TECHNOLOGY

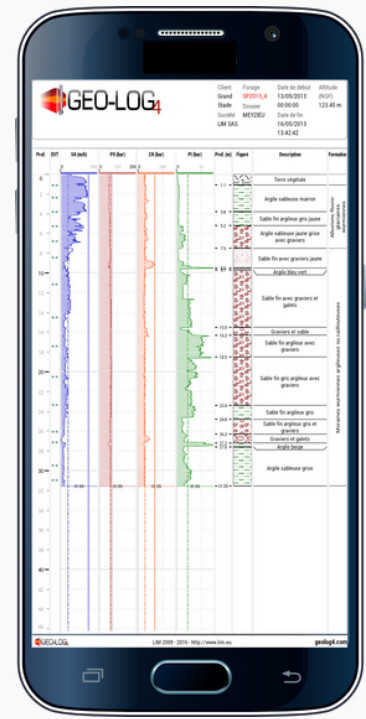
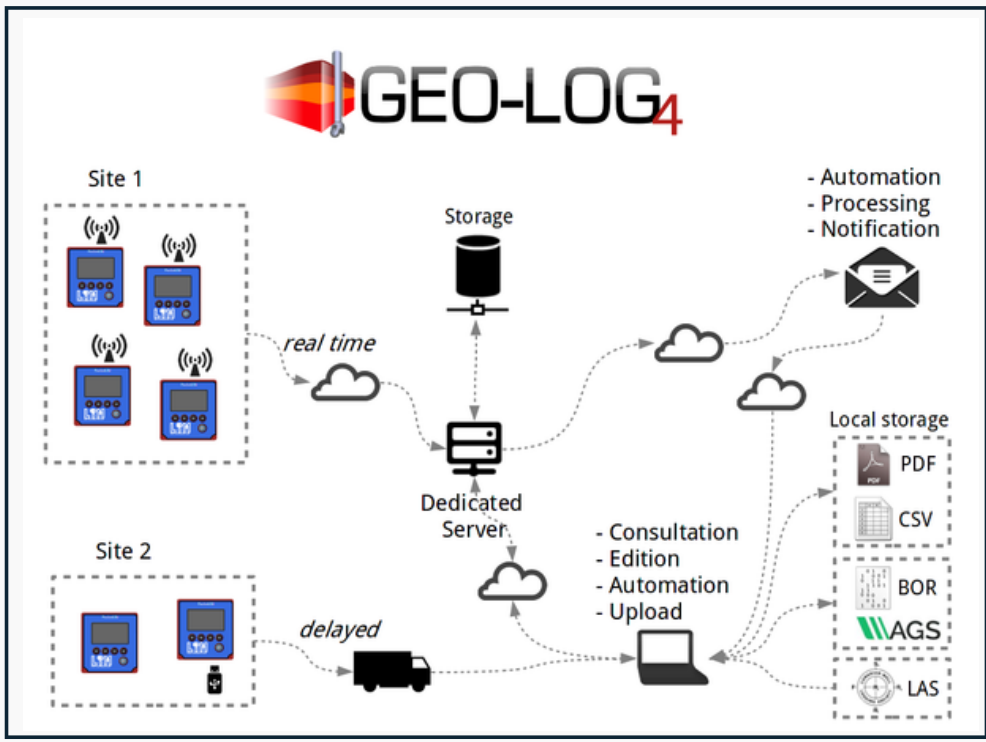
The **CAN BUS** network technology is making easier the installation of sensors, aftersales services and maintenance of the complete equipment. Additional measurement sensors can be easily added. This technology is very used in the industry particularly by the drill rigs manufacturers. It is a reliable and economical solution.

Since 2000, LIM has been the first drilling instrumentation manufacturer to introduce this inovating technology.





DATA TRANSFER, PROCESSING & REPORTING



GEO-LOG 4 targets:

- ✓ To follow drilling sites in real time;
- ✓ To centralize data;
- ✓ To collaborate;
- ✓ To work on line;
- ✓ To edit reports from anywhere;
- ✓ To use any type of device (laptop, smartphone, tablet);
- ✓ To secure data (confidentiality is preserved);
- ✓ To automatize data analysis and reporting;
- ✓ To save time due to the report pre-processing and sending.

Time is money

End of data loss

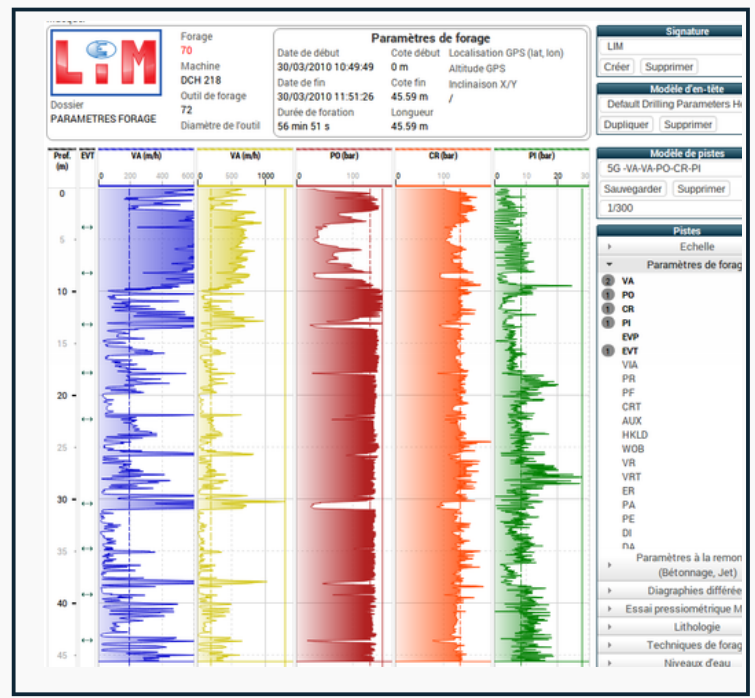
A web browser is enough



BOR open file format
<https://bor-form.at/en/>

Receive notifications in real time

User hot line is included



MAIN DRILLING FIELDS OF OPERATION

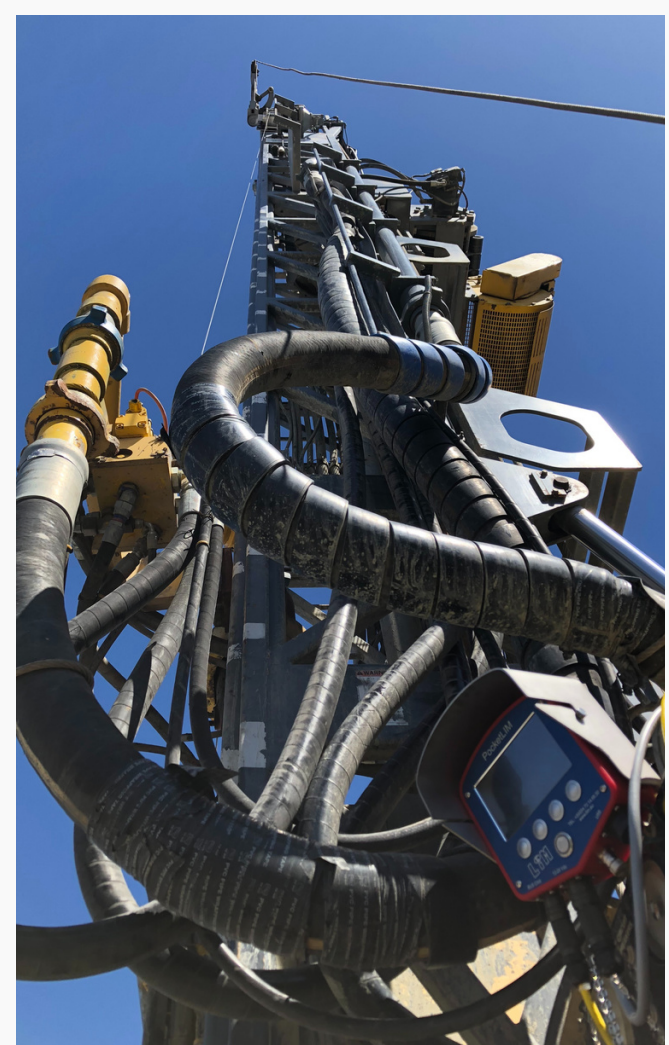
GEOTECHNICAL INVESTIGATION



FOUNDATION DRILLING



DRILL & BLAST



UNDERGROUND WORK

MINERAL & HYDROGEOLOGICAL EXPLORATION