

New Magnetic Susceptibility probe (MAGSUS) - MAG38

2023: As a replacement for the **MAG43** probe then the **MAG45** probes, **LIM LOGGING** has developed and marketed a new MAGSUS probe, the **MAG38** which is 100% "in-house" design. **LIM LOGGING** no longer integrates a sensor purchased externally and thus masters its technology. The new **MAG38** probe integrates a double coil antenna system, the reception chain of which allows the probe to be operated in "normal" (0 to 500 mSi) and "extended" (up to 5 Si) ranges, thus being able to respond to almost all possible operational cases.

As an option, the probe is supplied with a natural gamma detector which allows additional lithological information to be obtained and correlations to be carried out.



New MAG 38 probe: full view and view of the sensor section

[Click here to access the web page.](#)

New 600 and 1200m Logging winches

2023: In addition to the **WinchLIM 150 and 300**, two new logging winches have been placed on the market, the **WinchLIM 600** and **WinchLIM 1200** with respective capacities of 600 and 1200 m. LIM LOGGING will thus be able to offer a wide range of logging winches ranging from 150 to 1200 m.

Technical data of the new winches:

	WinchLIM 600	WinchLIM 1200
✓ Max. cable (3/16") length:	600 m (1969 ft)	1200 m (3937 ft)
✓ Max. speed:	0 - 40 m/min	0 - 40 m/min
✓ Dimensions:	57 x 61 x 70 cm	59 x 70 x 70 cm
✓ Weight w/o cable:	75 kg	85 kg
✓ Weight with cable (3/16"):	135 kg	200 kg



Newsletter #2 - November 2023

- ✓ Power supply:
- ✓ Motor power rating:

WinchLIM 600

220 VAC
1200 W

WinchLIM 1200

220 VAC
1200 W



WinchLIM 1200 and its remote control case

[Click here to access the web page.](#)

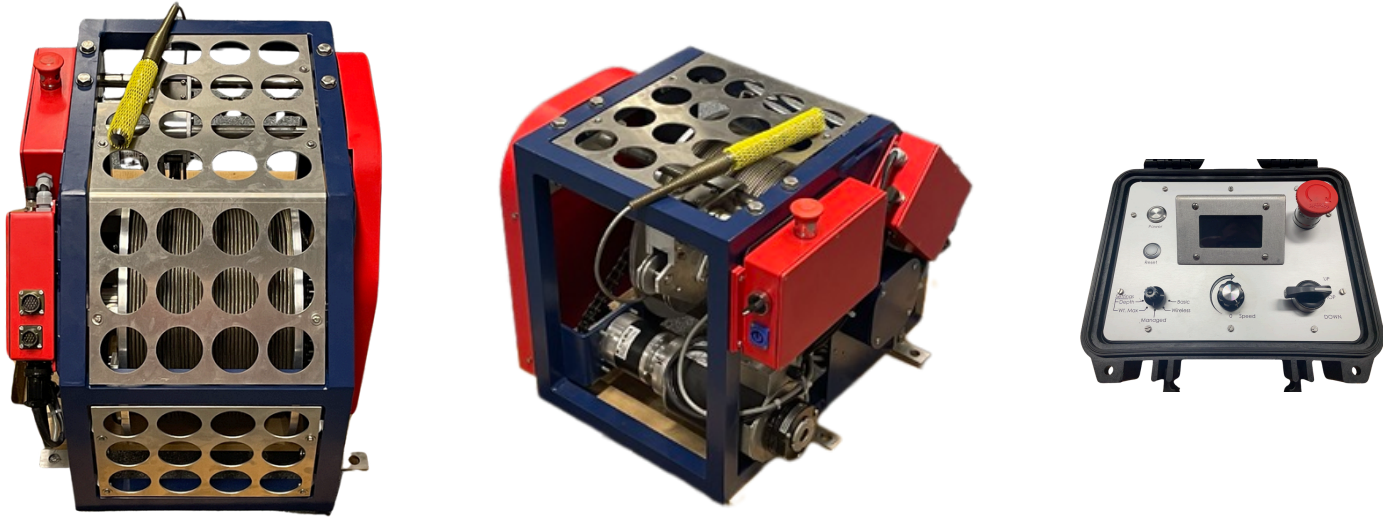
New version of the 300 m Logging winch

2023: The **WinchLIM 300**, whose initial version had some design flaws and was too heavy, has been completely redesigned based on the model of the **WinchLIM 600** and **WinchLIM 1200**. This therefore allows **LIM LOGGING** to standardize its extensive range of logging winches ranging from 150 to 1200 m.

Technical data of the **WinchLIM 300**:

- ✓ Max. cable (3/16") length: 300 m (984 ft)
- ✓ Max. speed: 0 - 20 m/min
- ✓ Dimensions: 52 x 45 x 57 cm
- ✓ Weight w/o cable: 40 kg
- ✓ Weight with cable (3/16"): 70 kg
- ✓ Power supply: 220 VAC 220 VAC
- ✓ Motor power rating: 300 W



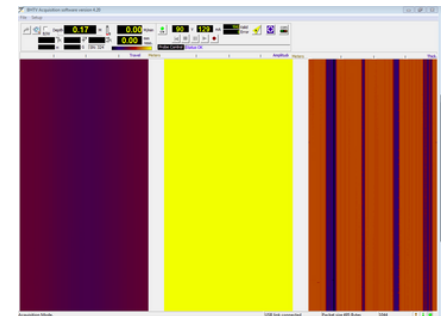
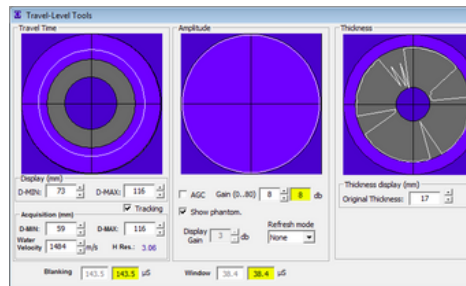
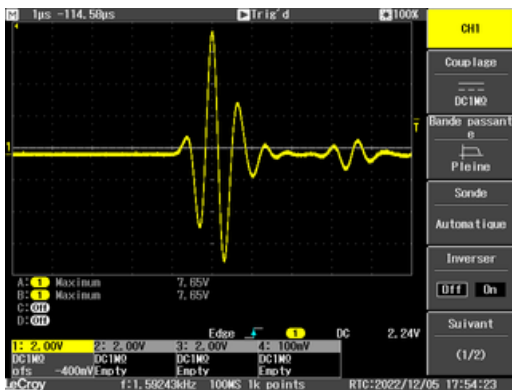


WinchLIM 300 and its remote control case

[Click here to access the web page.](#)

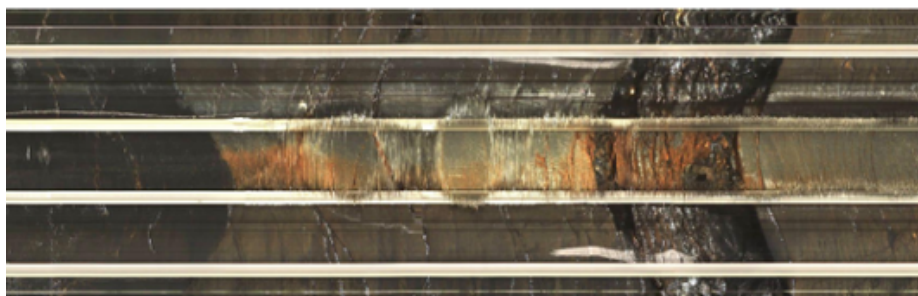
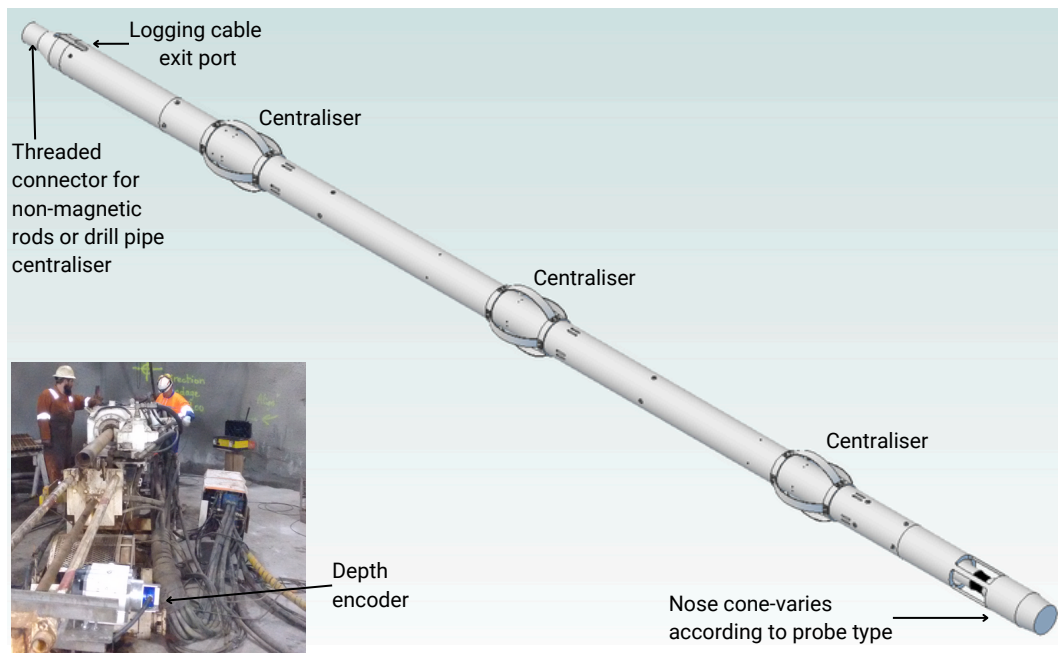
Current development project

The **LIM LOGGING** R&D team are currently working on a development project with the objective of adding a casing thickness measurement capability to our **BHTV42** probe. Basically, this involves implementing an additional signal acquisition sub-system, in order that the secondary signal reflected back from the outer surface of the casing can be detected and analysed. The detection algorithm has already been successfully tested on a laboratory prototype. A prototype field-testing probe is under construction and field trials are planned to start in early 2024.



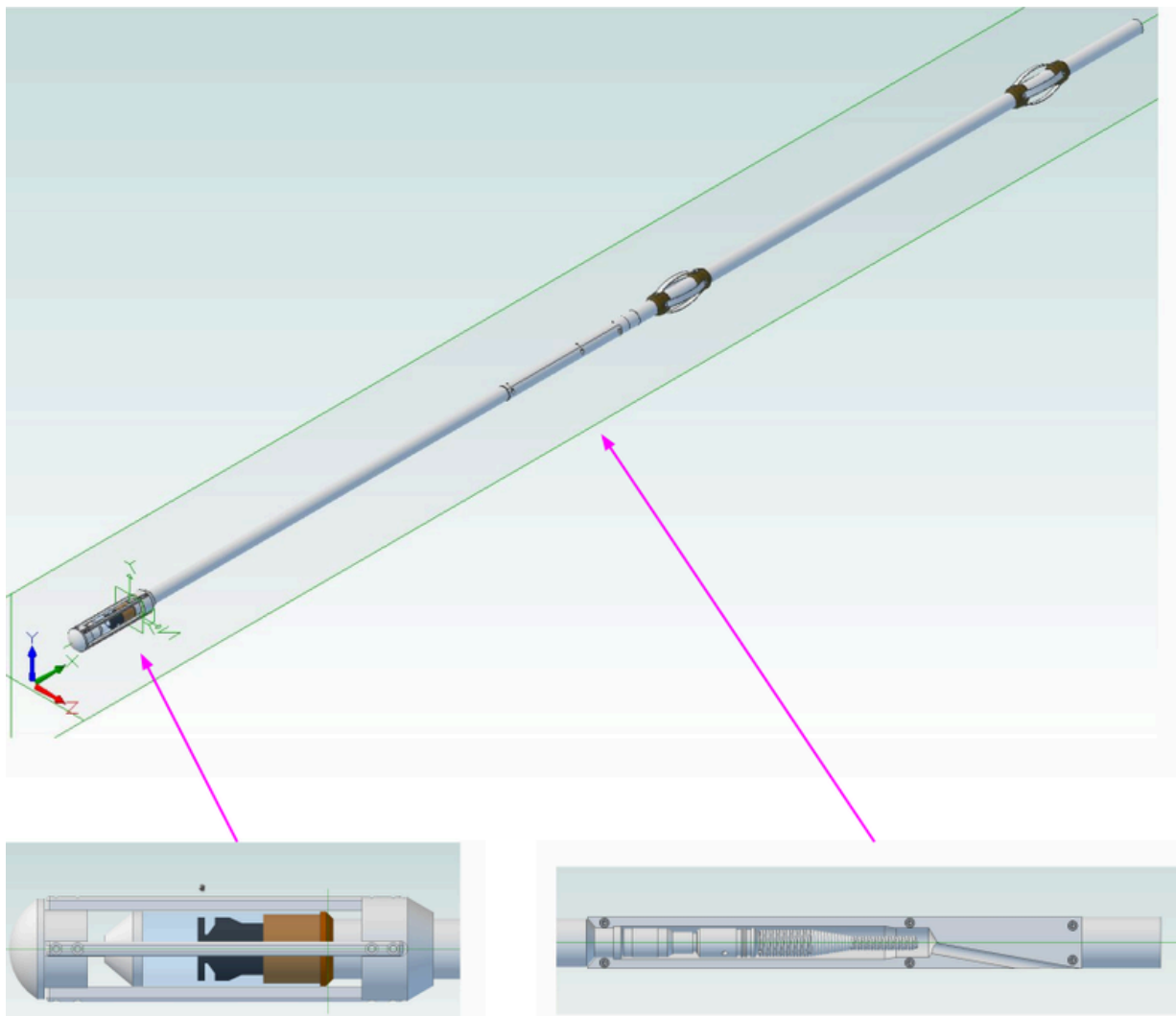
Probe Deployment System (PDS) for horizontal and upward boreholes:

- for borehole diameters HQ and above, propelled into and out of the borehole by the drilling machine;
- main housing contains the probe and maintains it centralised in the borehole;
- frontal cage according to type of probe;
- main housing connector with logging cable entry;
- non-magnetic aluminium rods for probes with orientation sensor;
- AQ/BQ drill rod connectors with centraliser.



PDS for NQ diameter

- For borehole diameter NQ, propelled into and out of the borehole by the drilling machine, or for manual pushing;
- 4 x skids protect the OPTV sensor section and centralise it in the borehole;
- A split housing fixes over the cablehead connector and provides a cable exit and rod connection;
- Non-magnetic aluminium rods for probes with orientation sensor;
- AQ/BQ drill rod connectors with centraliser.



PDS: Custom solutions

- Depth encoder system for eg. PVC tubes or Kevlar rods;
- Centraliser collars for small diameters.



Newsletter #2 - November 2023

New distributors and representatives since 2021

Our distribution network has been strengthened internationally in 2022-2023 with:

ABSOLUTE PRECISION KZ in Kazakhstan

S.M.D. (Solution Mécanique Diesel) for Eastern Canada (QC, Ontario, Maritime Provinces)

[Click to access the list of all our distributors](#)

The LIM sales team has been strengthened with the arrival of **Moe Tubor**, based in Indonesia, who covers the APAC zone for the marketing of the entire range of **LIM** and **LIM LOGGING** products.

Fairs & Exhibitions 2023 - Beginning of 2024

In 2023, we have already participated in the following fairs and exhibitions:

02/05 to 02/07 2023: **ISEE 2023** (*Drill & Blast*) - San Antonio (TX, USA);

03/05 to 03/08 2023: **PDAC 2023** (*Mine, Exploration*) - Toronto (ON, Canada);

03/26 to 03/29 2023: **Geo-Congress 2023** (*Geotechnics*) - Los Angeles (CA, USA);

04/02 to 04/06 2023: **SAGEEP 2023** (*Geophysics*) - New Orleans (LA, USA);

04/24 to 04/27 2023: **EXPOMIN 2023** (*Mines*) - Santiago (Chile);

06/14 to 06/15 2023: **SOLSCOPE 2023** (*Geotechnics, Foundations*) - Lyon (France);

08/28 to 08/31 2023: **IMAGE 2023** (*Geophysics*) - Houston (TX, USA);

09/04 to 09/06 2023: **EAGE NSR 2023** (*Geophysics*) - Edinburgh (SCO, United-Kingdom);

09/12 to 09/16 2023: **GEOFLUID 2023** (*Drilling, Geotechnics, Foundations*) - Piacenza (Italy);

10/04 to 10/06 2023: **SIM 2023** (*Mines & Quarries*) - Bordeaux (France);

10/31 to 11/03 2023: **DFI 2023** (*Foundations*) - Seattle (WA, USA).

For the end of 2023 and the beginning of 2024, we are registered for the following fairs and exhibitions:

12/05 to 12/07 2023: **NGWA** (*Drilling*) - Las Vegas (NV, USA);

01/25 to 01/27 2024: **ISEE 2024** (*Drill & Blast*) - Savannah (GA, USA);

03/03 to 03/06 2024: **PDAC 2024** (*Mine, Exploration*) - Toronto (ON, Canada).

